

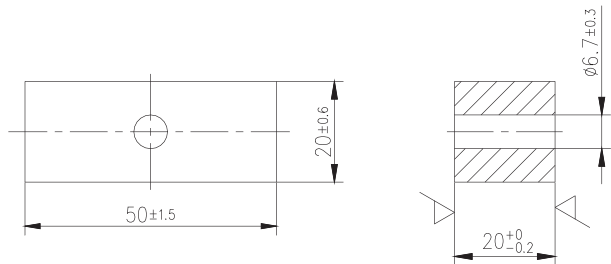


## Profilkerne/Profile cores

### Profilkern 20/20/50

Werkstoff/Material grade: Mf183

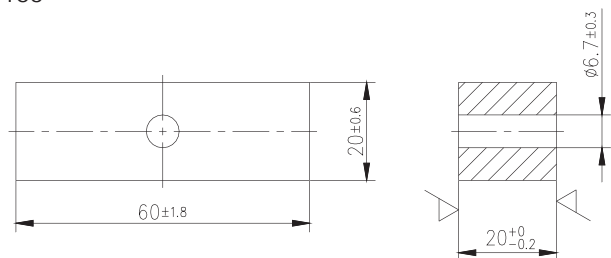
Gewicht / Weight: ca. 93 g



### Profilkern 20/20/60

Werkstoff/Material grade: Mf183

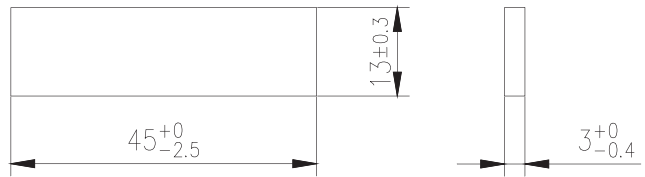
Gewicht / Weight: ca. 106 g





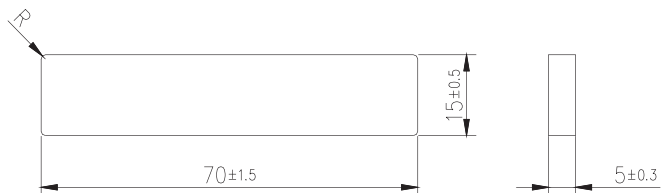
### Profilkern 45/13/3

Gewicht / Weight: ca. 9,5 g



### Profilkern 70/15/5

Gewicht / Weight: ca. 23 g



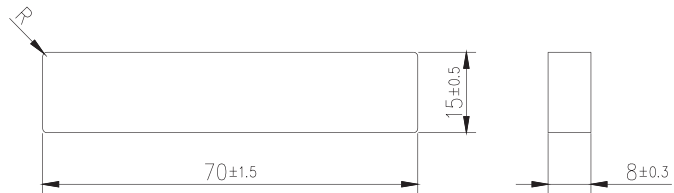


## Profilkerne/Profile cores

---

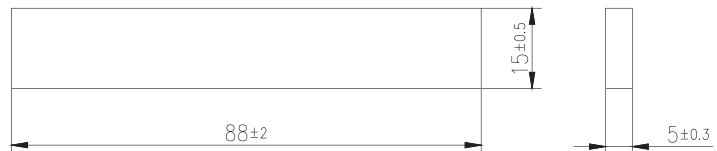
### Profilkern 70/15/8

Gewicht / Weight: ca. 38 g



### Profilkern 88/15/5

Gewicht / Weight: ca. 31 g



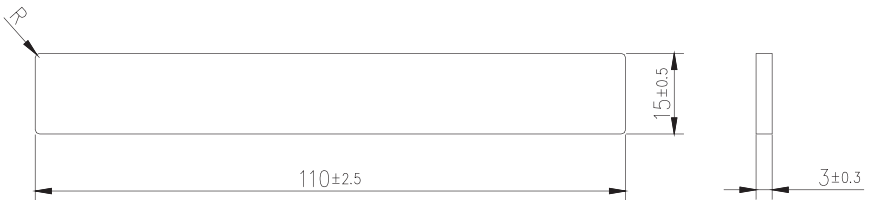
Profilkerne sind in verschiedenen Werkstoffen erhältlich.  
Nähere Informationen auf Anfrage.

Profile cores are available in several material grades.  
Please ask for more information.



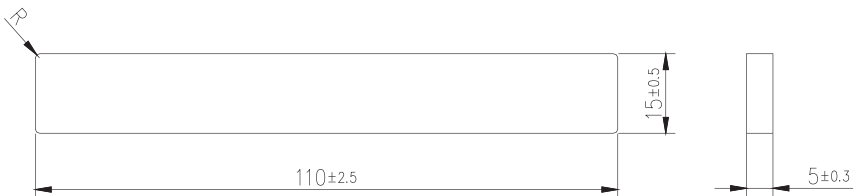
### Profilkern 110/15/3

Gewicht / Weight: ca. 21 g



### Profilkern 110/15/5

Gewicht / Weight: ca. 365 g



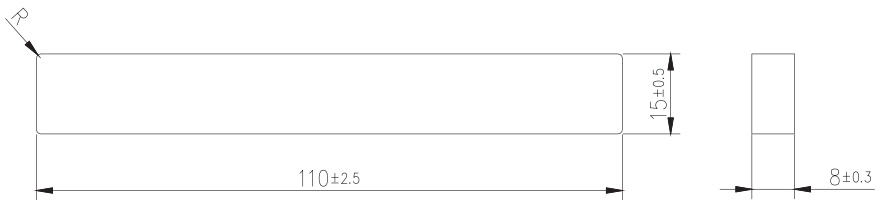
Profilkerne sind in verschiedenen Werkstoffen erhältlich.  
Nähere Informationen auf Anfrage.

Profile cores are available in several material grades.  
Please ask for more information.



### Profilkern 110/15/8

Gewicht / Weight: ca. 60 g



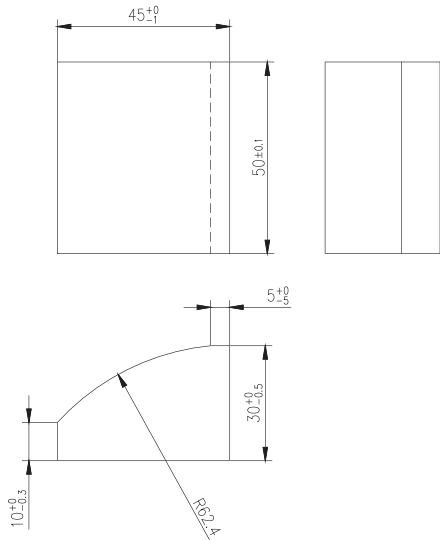
Profilkerne sind in verschiedenen Werkstoffen erhältlich.  
Nähere Informationen auf Anfrage.

Profile cores are available in several material grades.  
Please ask for more information.



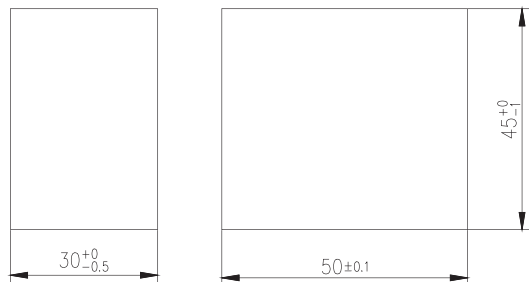
## Profilkern 50/43/30 mit Radius

Gewicht / Weight: ca. 245 g



## Profilkern 50/45/30

Gewicht / Weight: ca. 315 g



Profilkerne sind in verschiedenen Werkstoffen erhältlich.  
Nähere Informationen auf Anfrage.

Profile cores are available in several material grades.  
Please ask for more information.